

Tenure: Leasehold  
Local Authority: East Suffolk Council

Energy Efficiency Rating		
	Current	Potential
Very energy efficient - lower running costs		
(92 plus) <b>A</b>		
(81-91) <b>B</b>		
(69-80) <b>C</b>		
(55-68) <b>D</b>		
(39-54) <b>E</b>		
(21-38) <b>F</b>		
(1-20) <b>G</b>		
Not energy efficient - higher running costs		
<b>England &amp; Wales</b>	EU Directive 2002/91/EC	

**£20,000**  
Asking Price



## Beach Hut

Pakefield, NR33 0JS

- Gorgeous beach hut in Pakefield
- Panoramic sea views from a prime beachfront position
- Bright coastal décor
- Space to put out a table & chairs
- Rare opportunity in a highly desirable location
- Low site fees – just £600 per year
- Leasehold
- Access to facility hut with hot & cold water and toilets
- Close to local restaurants & shops
- Perfect for couples & families seeking a seaside retreat

**Paul Hubbard Estate Agents**  
178-180 London Road South  
Lowestoft  
Suffolk  
NR33 0BB

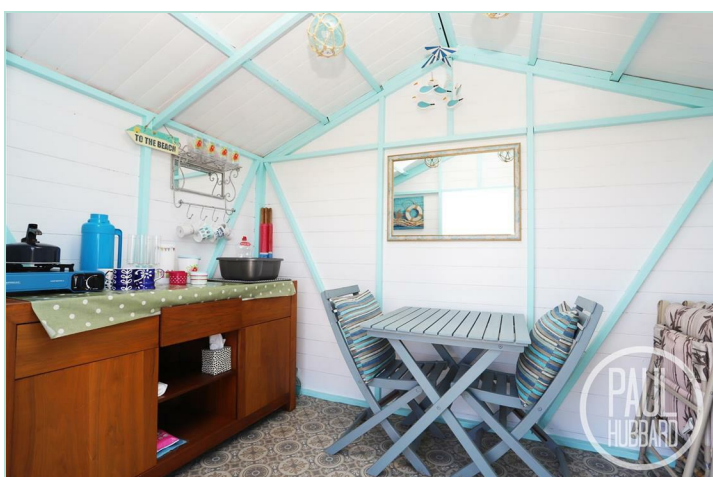
**Contact Us**  
www.paulhubbardonline.com  
01502 531218  
info@paulhubbardonline.com

Agents Note: Whilst every care has been taken to prepare these sales particulars, they are for guidance purposes only. All measurements are approximate and for general guidance purposes only and whilst every care has been taken to ensure their accuracy, they should not be relied upon and potential buyers are advised to recheck the measurements

e - info@paulhubbardonline.com

t - 01502 531218





### Summary

A rare opportunity to own a front-row beach hut on Pakefield's stunning seafront, offering panoramic sea views and charming coastal décor. With space to sit outside, low site fees of just £600 per year, and access to shared facilities, it's the perfect seaside retreat for couples and families. Just steps from local shops, restaurants, and the Jolly Sailors pub, this leasehold hut is ready for you to make it your own.

### Location

Pakefield is a highly sought-after coastal village in Lowestoft, Suffolk, known for its award-winning sandy beaches, charming Victorian seafront gardens, and welcoming community atmosphere. With independent cafés, two piers, scenic walking routes, and strong public transport links, it offers a peaceful yet well-connected seaside lifestyle.

### Description

1.95m x 2.98

Situated on the highly sought-after front row of Pakefield's beautiful seafront and just steps from the ever-popular Jolly Sailors pub, "Shiver Me Timbers" is a charming beach hut offering a peaceful coastal escape. Painted in soft coastal blues and whites, the hut features patterned vinyl flooring and a front door framing picturesque views of the dunes and the shimmering North Sea, making this compact yet cleverly designed retreat ideal for enjoying day trips, seaside picnics, or simply unwinding by the water. A rare opportunity to own a slice of Suffolk's stunning coastline. Ready for your personal touch.

### Lease Information

15 Years remaining on the lease. Ground rent £600 PA.

